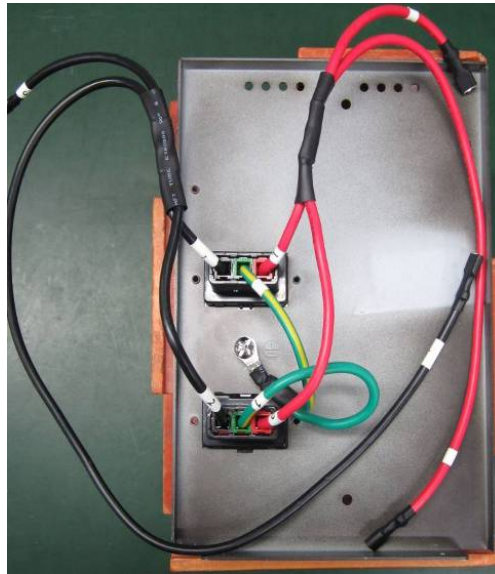


## S.O.P. - How to assemble BP P36T-6x9Ah

### Warning:

Be careful when connect batteries, do not make batteries have short circuit.

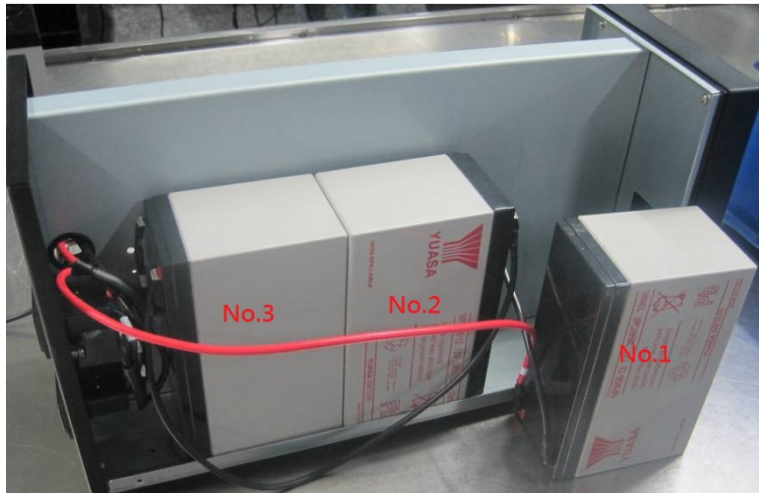
1. The receptacles' wires have been assembled, please do not dismantle them.



2. Please place 3PCS batteries into the Battery Case both sides and fix them as below.

- a). The bat receptacle's longer red wire connect to the NO.1 battery's anode.
- b). The bat receptacle's shorter black wire connect to the NO.3 battery's cathode.
- c). The NO.1 battery's cathode connects to NO.2 battery's anode.
- d). The NO.2 battery's cathode connects to NO.3 battery's anode.



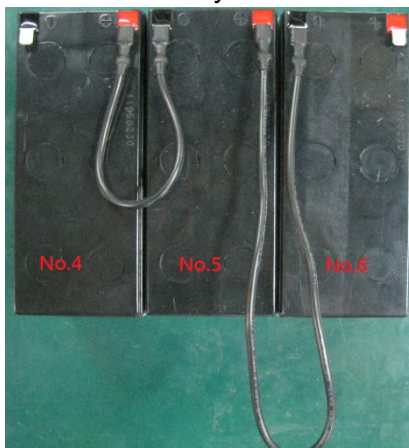


3. Please place the batteries into the Battery Case and fix them as below.



4. Please place 3PCS batteries into the Battery Case both sides and fix them as below.

- a). The bat receptacle's shorter red wire connect to the NO.6 battery's anode.
- b). The bat receptacle's longer black wire connect to the NO.4 battery's cathode.
- c). The NO.4 battery's anode connects to NO.5 battery's cathode.
- d). The NO.5 battery's anode connects to NO.6 battery's cathode.





5. Please place the batteries into the Battery Case and fix them as below.



So you finish assembling batteries and you can fix the cover now.

